



12.A1

12.A2

# ENGLISH

**12.A1/A2 DIGITAL ASTRO TIME SWITCH**  
 Programmable with NFC technology with the App FINDER TOOLBOX downloaded from Google Play™ - Apple Store.

## 1 DISPLAY INDICATORS

- A Setting Menu
- B Days of the week (1=Mon...7=Sun)
- C Holiday program
- D Permanent Manual over-ride activated - channel A
- E Channel A functions (ON, OFF, Astro ON, Astro OFF, Pulse)
- F Day - Advanced/Retarded - seconds/minutes
- G Channel B functions (ON, OFF, Astro ON, Astro OFF, Pulse)
- H Permanent Manual over-ride activated - channel B (12.A2 only)
- I Time-CP (post code), year, day, month, hours, minutes, daylight saving ON/OFF, holiday program (Start: day/month. Finish: day/month) PIN ON/OFF, End
- L Time switch without power supply (powered by battery) - Low battery (with power supply)
- M Cancel
- N Program number (max 50) - IT (country), CP (leading two characters of CP), Coor (geographic coordinates in degrees), N(North)/S(South), E(East)/W(West), TZ(Time zone), Y(year), D(day), M(month), H(hour), M(minutes), Daylight saving ON/OFF (EU=Europe - BR=Brazil - AU=Australia) Holiday program (Start: day/month. Finish: day/month)
- O Programming

## 2 SETTINGS (examples)

- 2a Setting: Country, CP (leading two characters of CP), year, day, month, hour, minutes, EU (daylight saving)
- 2b Holiday program (Start: day/month. Finish: day/month), PIN, END
- 2c Setup by geographic coordinates. Start at 2a, but at the select Country or select CP stage, scroll down with to enter Coor setting. Continue by setting the coordinates and time zone. Latitude: North-South. Longitude: East-West. Time zone(TZ)

## 3 PROGRAMMING (examples)

- 3a ASTRO ON - ASTRO OFF Function (18:19 Astro ON + retarded 10 min - 05:20 Astro OFF + advanced 20 min); Day: Mon...Fri
- 3b ON - OFF Function (6:25 ON - 19:15 OFF, Mon, Wed, Fri, Sun)
- 3c PULSE function (11:00 pulse 5 s, Mon Wed Fri)

## 4 MANUAL MODE

- 4a Manual ON/OFF channel A
- 4b Manual ON/OFF channel B (only 12.A2)
- 4c Permanent Manual over-ride ON/OFF - Channel A
- 4d Permanent Manual over-ride ON/OFF - Channel B (12.A2 only)

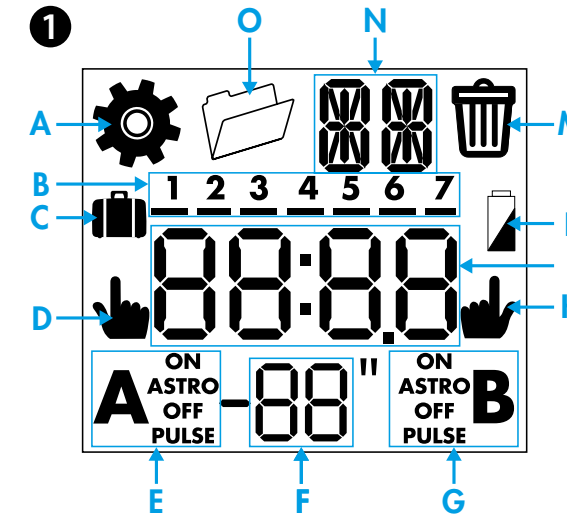
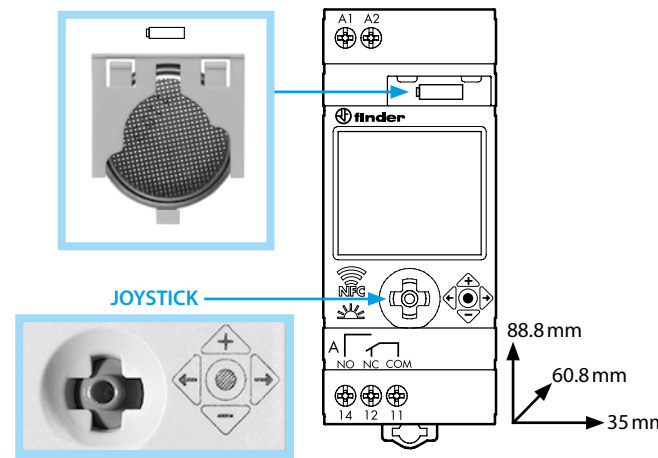
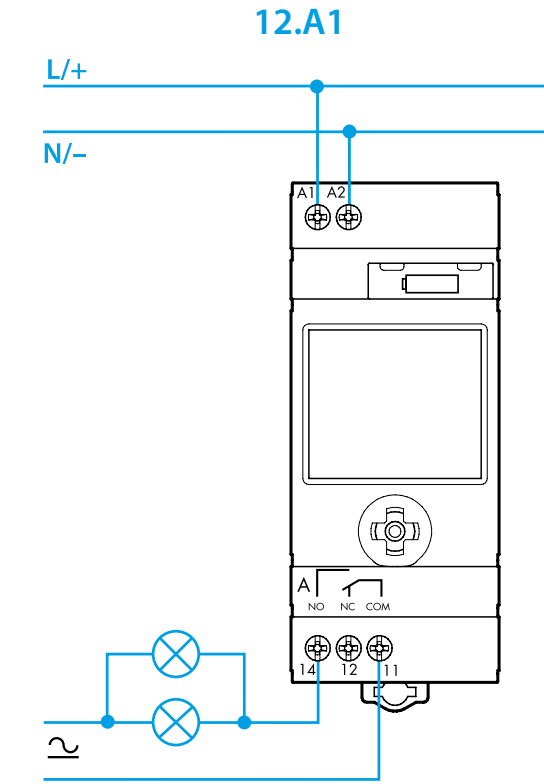
## 5 DELETION of all program

## 6 DELETION of single program

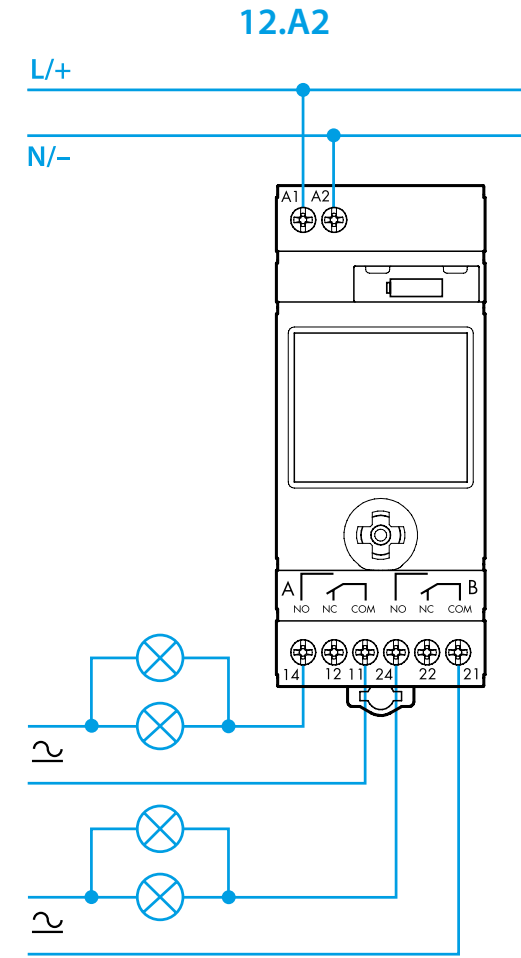
### NOTE

- Battery replacement: BATTERY CR 2032 (LiMnO<sub>2</sub>) 3V, 230mAh. Complies with Article 11, EU directive 2006/66/CE. Dispose of batteries according to local regulations
- Back-light display (only with power supply)
- Minimum switching interval: 1 second (pulse function)
- ASTRO times vary over the year, time switch times remain constant

EN 60669-1/EN 60669-2-1	
	<b>12.Ax.8.230.0000</b> U <sub>N</sub> 110...230 V AC (50/60 Hz)/DC U <sub>min</sub> - U <sub>max</sub> 90 V - 264 V (AC/DC) P 2.8 VA (50 Hz)/0.9 W
	<b>12.A2.0.024.0000</b> U <sub>N</sub> 12...24 V AC (50/60 Hz)/DC U <sub>min</sub> - U <sub>max</sub> 10 V - 30 V (AC/DC) P 2.2 VA/1.2 W
	1 CO (SPDT) (12.A1) 2 CO (DPDT) (12.A2) 16 A 250 V AC
	AC1 4000 VA AC15 (230 V AC) 750 VA
	(230 V) 2000 W (230 V) 750 W <b>CFL-LED</b> (230 V) 400 W
	(-20...+50)°C
IP20	

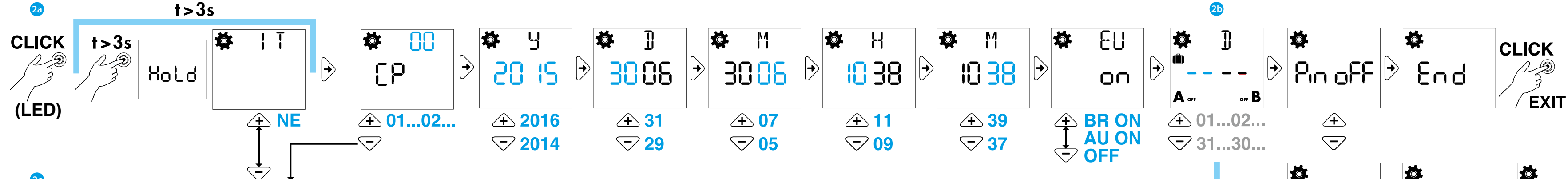



- Operating Control, Independently mounted
- Panel mounting, Type 1 Action
- Pollution Degree 2, Impulse Voltage 4000 V (800 V for 12...24 V models)
- Terminals nominal torque: 0.8 Nm
- The battery can be replaced only by the manufacturer or competent personnel
- The device can be installed and configured only by the installer or a qualified installer

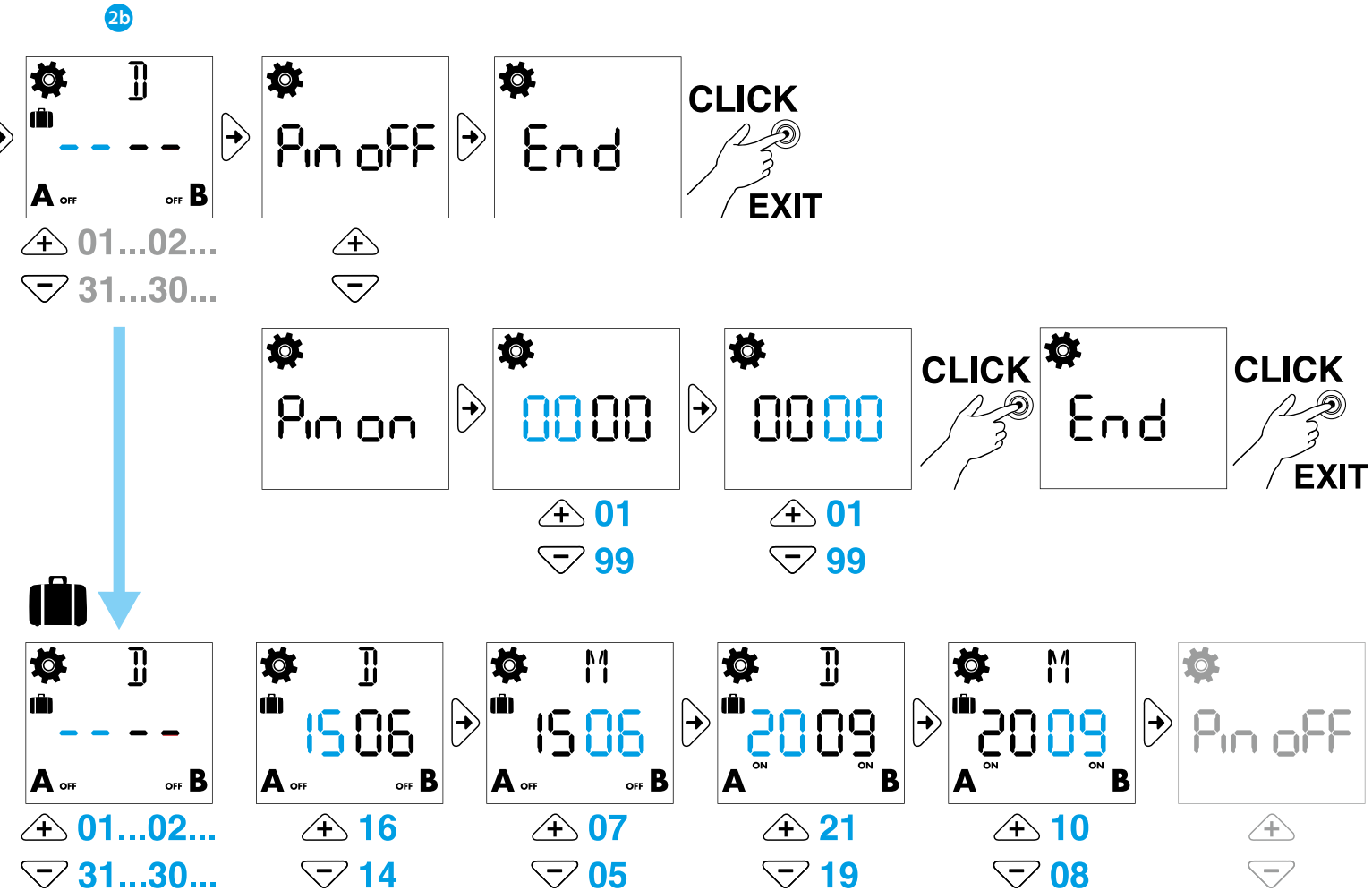


2

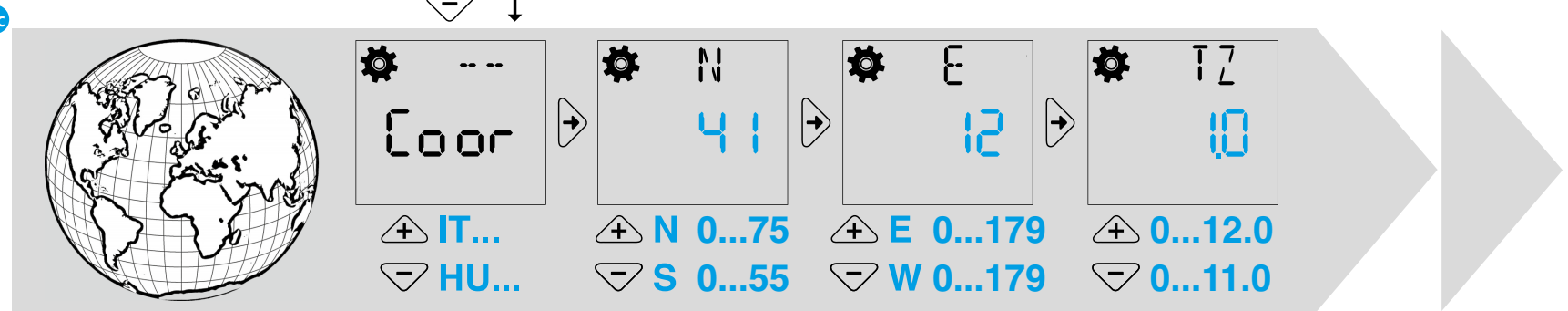
2a



2b



2c



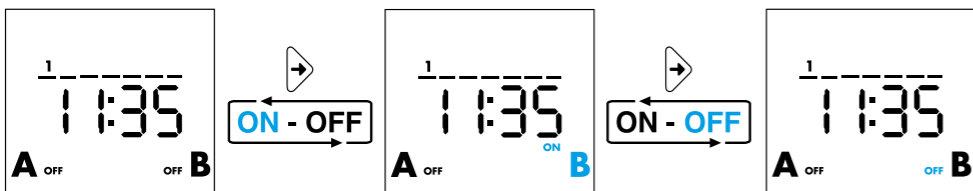


4

4a



4b



4c



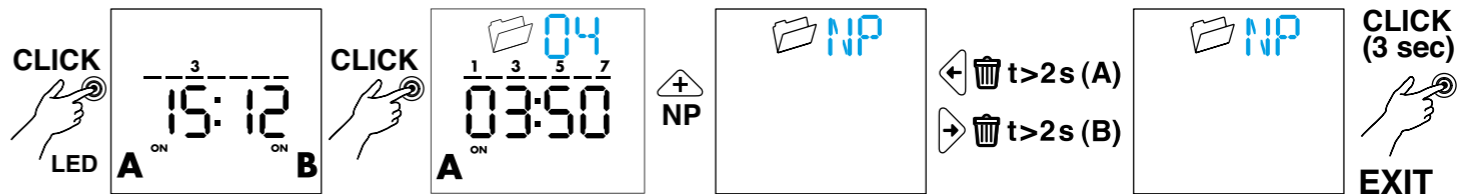
4d



5

IT CANCELLAZIONE DI TUTTI I PROGRAMMI  
 EN DELETION OF ALL PROGRAM  
 FR SUPPRESSION DE TOUS LES PROGRAMMES  
 DE LÖSCHEN ALLER PROGRAMME  
 NL WISSEN VAN ALLE PROGRAMMA'S  
 PT DELETAR TODOS OS PROGRAMAS  
 ES BORRAR TODOS LOS PROGRAMAS

HU AZ ÖSSZES PROGRAM TÖRLÉSE  
 CS ODSTRANĚNÍ VŠECH PROGRAMŮ  
 PL USUNIĘCIE WSZYSTKICH PROGRAMÓW  
 RO ȘTERGE TOATE PROGRAMELE  
 RU УДАЛЕНИЕ ВСЕХ ПРОГРАММ  
 EL ΔΙΑΓΡΑΦΗ ΌΛΩΝ ΤΩΝ ΠΡΟΓΡΑΜΜΑΤΩΝ  
 AR محو كل البرامج



6

IT CANCELLAZIONE DI UN SINGOLO PROGRAMMA  
 EN DELETION OF SINGLE PROGRAM  
 FR SUPPRESSION D'UN SEUL PROGRAMME  
 DE LÖSCHEN EINES PROGRAMMES  
 NL WISSEN VAN EEN ENKEL PROGRAMMA  
 PT DELETAR UM ÚNICO PROGRAMA  
 ES BORRAR UN PROGRAMA

HU EGY PROGRAM TÖRLÉSE  
 CS ODSTRANĚNÍ JEDNOHO PROGRAMU  
 PL USUNIĘCIE JEDNEGO PROGRAMU  
 RO ȘTERGE UN SINGUR PROGRAM  
 RU УДАЛЕНИЕ ОДНОЙ ПРОГРАММЫ  
 EL ΔΙΑΓΡΑΦΗ ΕΝΟΣ ΠΡΟΓΡΑΜΜΑΤΟΣ  
 AR محو برنامج واحد

